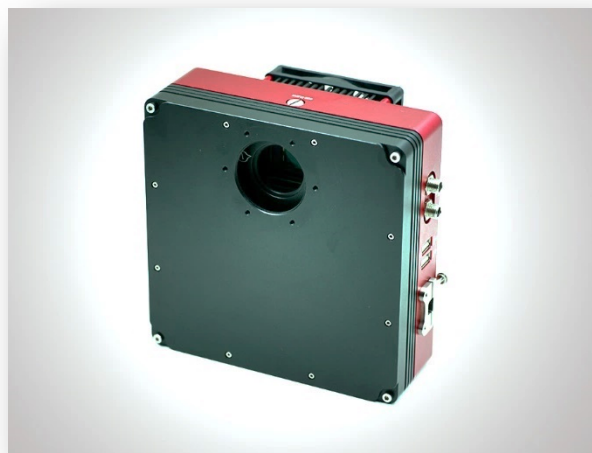




QHYCCD

QHY695A 6 Megapixel High QE, Low Noise 1" Cooled CCD Camera



Sony ICX695 ExView II CCD

The QHY695A uses the Sony ICX695 ExView II CCD, a 1-inch, 6 megapixel sensor with a peak QE close to 80%. The read noise is as low as 4 electrons. With the two-stage TEC reducing the sensor temperature to -40C below ambient, and the extremely low thermal noise of this CCD, this camera produces an exceptionally clean image.

"A" Series Camera –Fully Integrated with Filter Wheel

The QHY695A belongs to the new QHYCCD "A" series camera family. "A" stands for "ALL-IN-ONE". It includes a built-in motor driven filter wheel and it natively supports the medium size QHYOAG. The OAG can be installed on the camera solidly with six screws consuming a minimum of back focus, precious for some optical systems. The filter wheel in QHY695A has 7-positions for 36mm unmounted filters, or an alternative carousel with 8-positions for 1.25" mounted filters.

Internal USB Hub

In addition to the filter wheel and OAG, the "A" series camera also offers an internal USB HUB(2.0) providing two USB host ports and a USB to dual RS232 converter. A guiding camera, mount and electric focuser can be connected directly to this camera instead of the computer to reduce cable clutter and the chance of signal loss due to the long cables. A single USB cable controls all of the peripherals.

Single 12V power socket

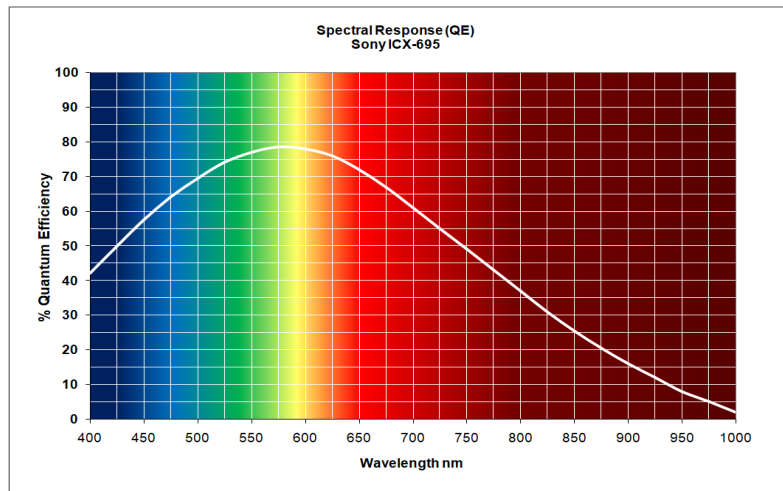
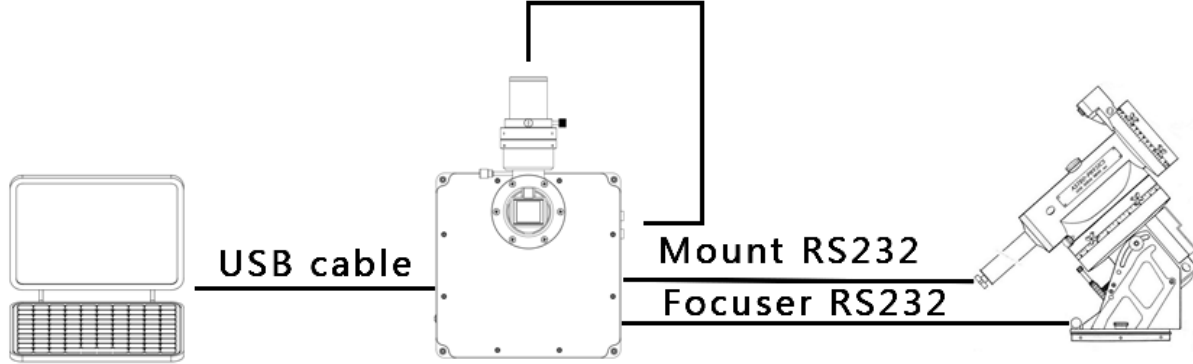
This camera uses a single 12V IN power port. The power socket is threaded for a solid connection that will not accidentally disconnect. There is another socket connected in parallel with the input that can be used to supply 12V OUT to other devices.

Butterfly Shutter - long life and uniform illumination

Although the sensor has electronic shutter, this camera also has a mechanical shutter. This makes it possible to automatically take dark frames, unattended. The shutter is directly driven by a motor with no other moving parts. The working life is almost unlimited. The shutter has two sides that block light and open spaces in between. The fan shape of the blades creates even-illumination when opening, and even-darkness when closing for dark frames. This feature is of great benefit when taking flat frames or making photometric measurements.

"A" Series Camera Connections

Guide Camera USB



Model	QHY29
Sensor	Sony ICX695 Mono
Optical Format	1-inch
Sensor Size	14.6mm x 12.8mm (19.4mm diagonal)
Total Active Pixels	6 Megapixels
Pixel Size	4.54um x 4.54um
Active Pixel Array	2758 x 2208
Cooling Delta T	-40C, Regulated
Read Noise	4e- to 5e- typical
Shutter	Electronic and Even-illumination mechanical for automatic dark frames
A/D Resolution	16-bit
Peak QE	79%
Full Well Capacity	15 – 20ke-
Computer Interface	USB 2.0
Weight	1550g
Reference Price	\$2899

For more information please visit: <http://www.qhyccd.com>