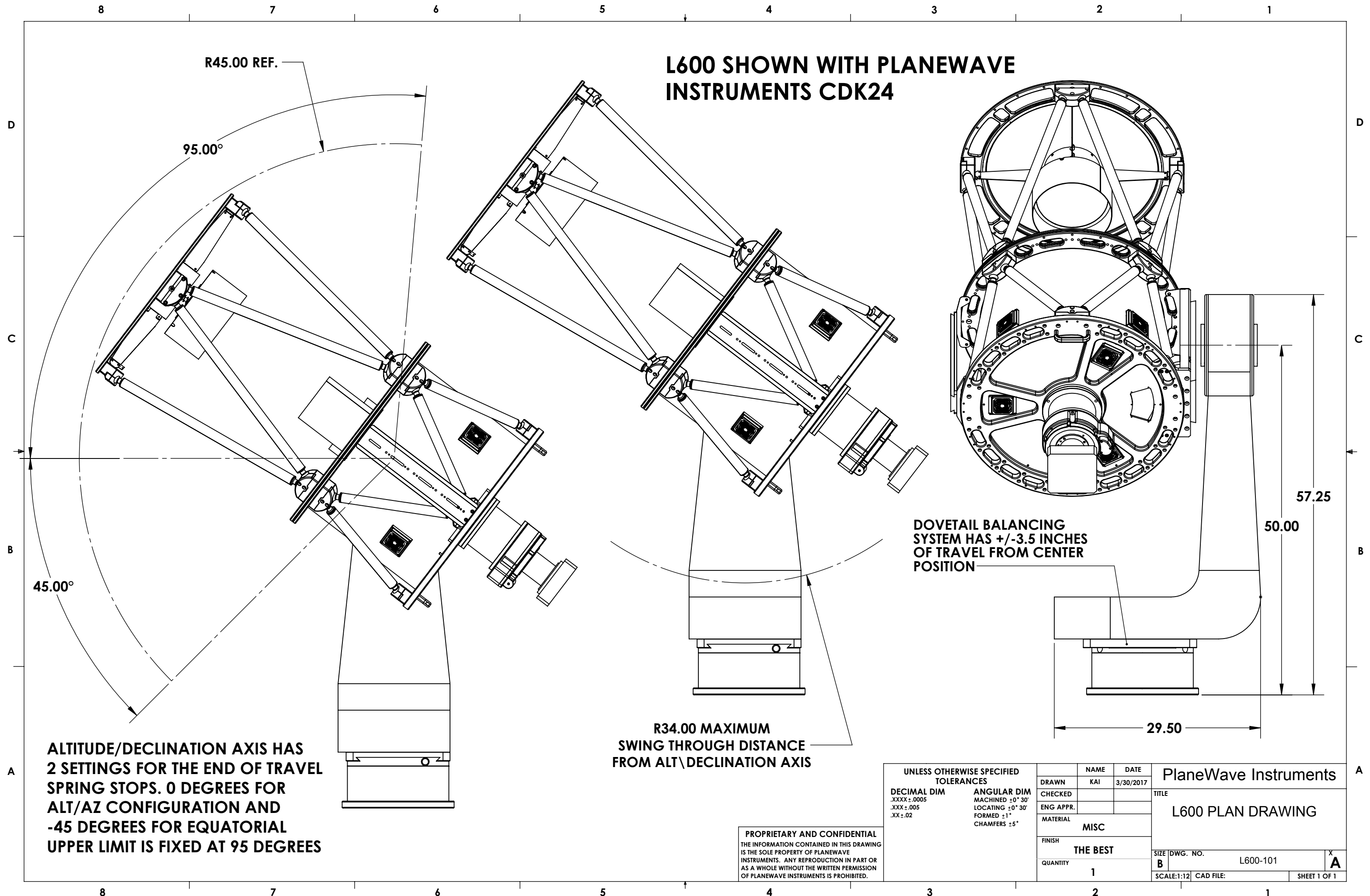


L600 SHOWN WITH PLANEWAVE INSTRUMENTS CDK24



ALTITUDE/DECLINATION AXIS HAS 2 SETTINGS FOR THE END OF TRAVEL SPRING STOPS. 0 DEGREES FOR ALT/AZ CONFIGURATION AND -45 DEGREES FOR EQUATORIAL UPPER LIMIT IS FIXED AT 95 DEGREES

R34.00 MAXIMUM SWING THROUGH DISTANCE FROM ALT\DECLINATION AXIS

DOVETAIL BALANCING SYSTEM HAS +/-3.5 INCHES OF TRAVEL FROM CENTER POSITION

PROPRIETARY AND CONFIDENTIAL
THE INFORMATION CONTAINED IN THIS DRAWING IS THE SOLE PROPERTY OF PLANEWAVE INSTRUMENTS. ANY REPRODUCTION IN PART OR AS A WHOLE WITHOUT THE WRITTEN PERMISSION OF PLANEWAVE INSTRUMENTS IS PROHIBITED.

UNLESS OTHERWISE SPECIFIED TOLERANCES		NAME	DATE	PlaneWave Instruments
DECIMAL DIM	ANGULAR DIM	DRAWN	CHECKED	
.XXXX ±.0005	MACHINED ±0° 30'	KAI	3/30/2017	TITLE
.XXX ±.005	LOCATING ±0° 30'	CHECKED		L600 PLAN DRAWING
.XX ±.02	FORMED ±1°	ENG APPR.		
	CHAMFERS ±5°	MATERIAL	MISC	
		FINISH	THE BEST	
		QUANTITY	1	SIZE DWG. NO.
				B L600-101 X
				SCALE:1:12 CAD FILE: SHEET 1 OF 1