

# **STARAiD** **REVOLUTION**

## QUICK START GUIDE



# In the box

## 1. StarAid Revolution

- A. Uplink port
- B. USB connector
- C. LED 1
- D. LED 2

## 2. Splitter

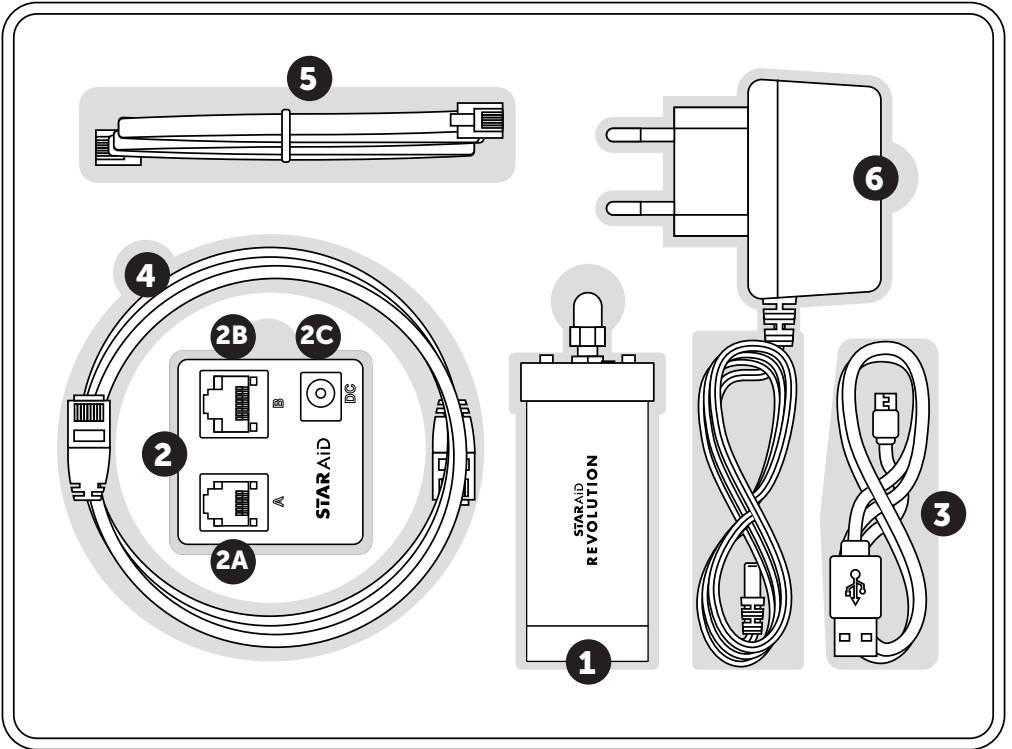
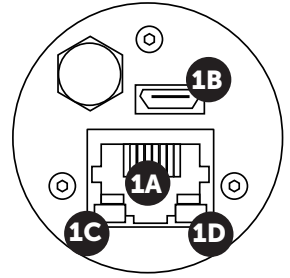
- A. Guide port
- B. Uplink port
- C. Power supply input

## 3. USB Cable

## 4. Uplink cable

## 5. Guide cable

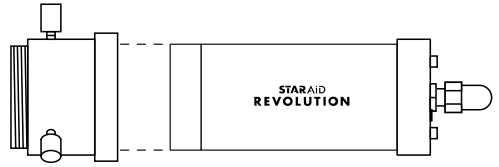
## 6. Power supply



# Starting up StarAid Revolution

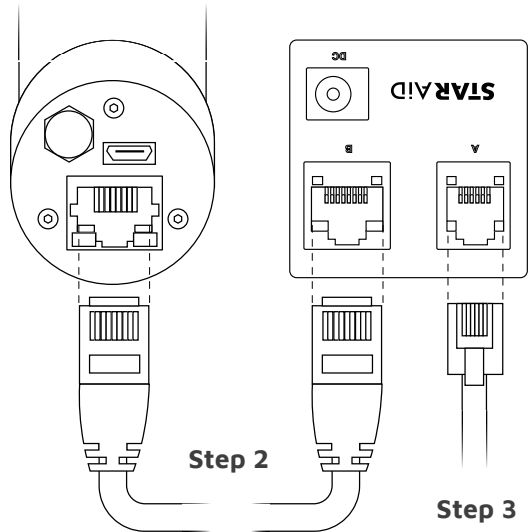
**Step 1: Attach StarAid Revolution (1) to the guide scope or off-axis guider (via standard 1 ¼" barrel or C-mount ring)**

**⚠** Do not touch the sensor.



## Step 2: Connect StarAid to the splitter

Connect the uplink cable (4) to the StarAid uplink port (1a) and to the splitter uplink port (2B).



## Step 3: Connect the splitter (2) to the mount guide port

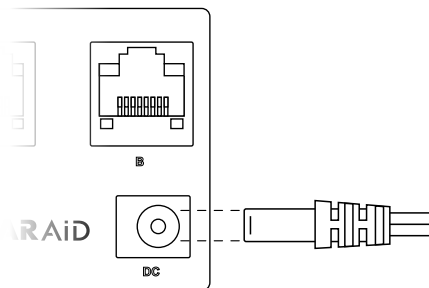
Only for guiding. Step not needed for polar alignment only.

Unplug your mount and splitter. Connect the guide cable (5) to the splitter guide port (2A) and your mount guide port.

## Step 4: Connect the power supply (6) to the splitter (2)

Connect the power supply (6) to the power supply input on the splitter (2c). Plug in the power supply. **Yellow pulsing of LED 2 indicates the completion of the startup.**

If this is the first time you connect your StarAid Revolution, proceed to the StarAid App configuration.



# Connecting to your (mobile) device

For monitoring the status of guiding, you can connect StarAid Revolution to your smartphone, tablet or laptop. *This step is optional and not necessary for the correct operation of StarAid Revolution.*

There are two ways to connect your (mobile) device to StarAid Revolution.

## 1. Access via WiFi

- A. Use your personal credentials or scan the QR code.
- B. Access the StarAid App using your device's browser by entering the following URLs (depending on your device, some may not work):
  - [my.staraid](http://my.staraid)
  - <http://my.staraid>
  - <http://192.168.55.1>
  - <http://169.254.54.1>

## 2. Access via USB

- A. Connect the USB cable (3) to StarAid Revolution and your device.
- B. Access the App using your device's browser. Enter the following URL:  
**<http://169.254.54.1>**

*Visit [staraid.ai/faq](http://staraid.ai/faq) for troubleshooting*

---

## Focusing

In order for StarAid Revolution to function, the guide scope or off-axis guide configuration must be in focus. This can be done by accessing the “Live View” menu from the App.

## Autoguide mode

From the home menu, select the Autoguiding page. Here you can activate the guiding feature. Once activated, StarAid Revolution will automatically start guiding as soon as you turn it on the next time.

## Polar alignment mode

The polar alignment procedure is activated by navigating to the “Polar Alignment” menu. Follow the steps in the App. It will guide you through it.

## Sky Recognition / Plate solving

From the home menu, navigate to the “Sky Recognition” menu. In autoguiding mode, Sky Recognition mode is automatically active. Its information is displayed in this menu. From this menu, you can also manually request a new position solution.